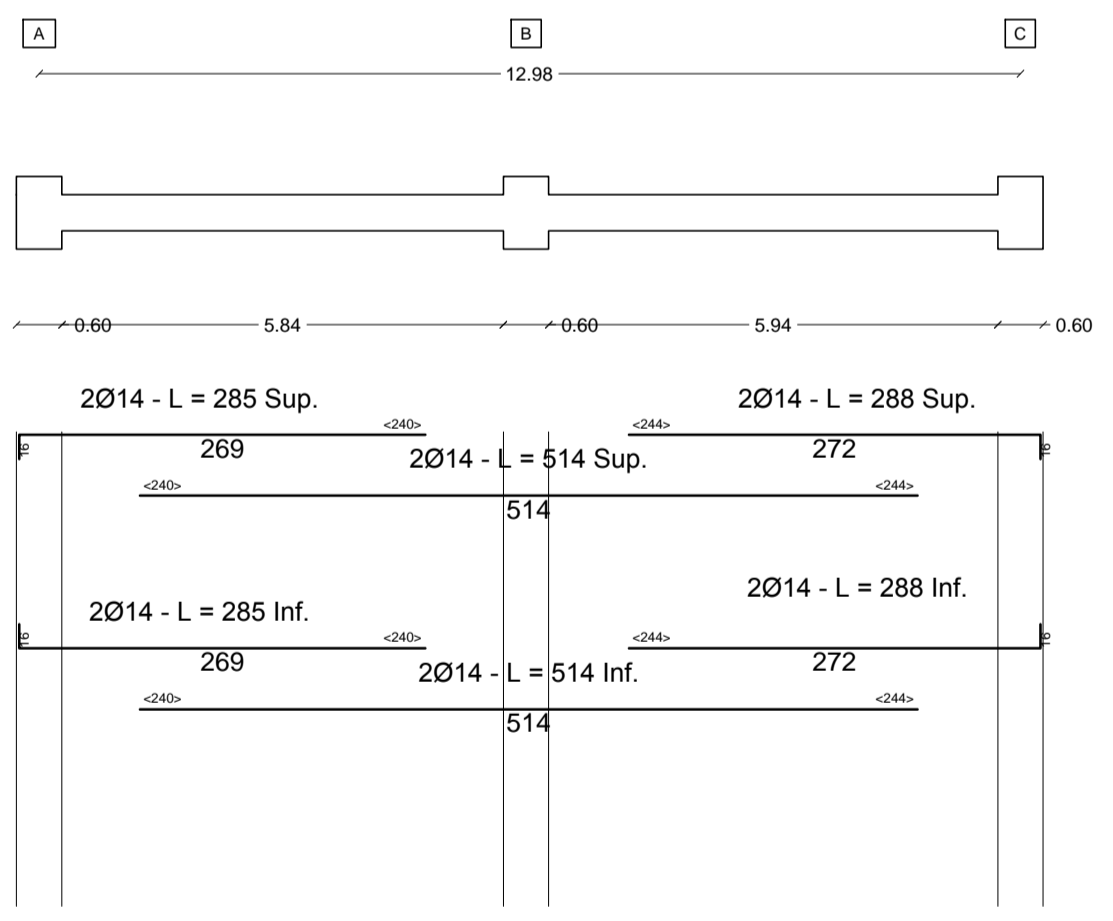
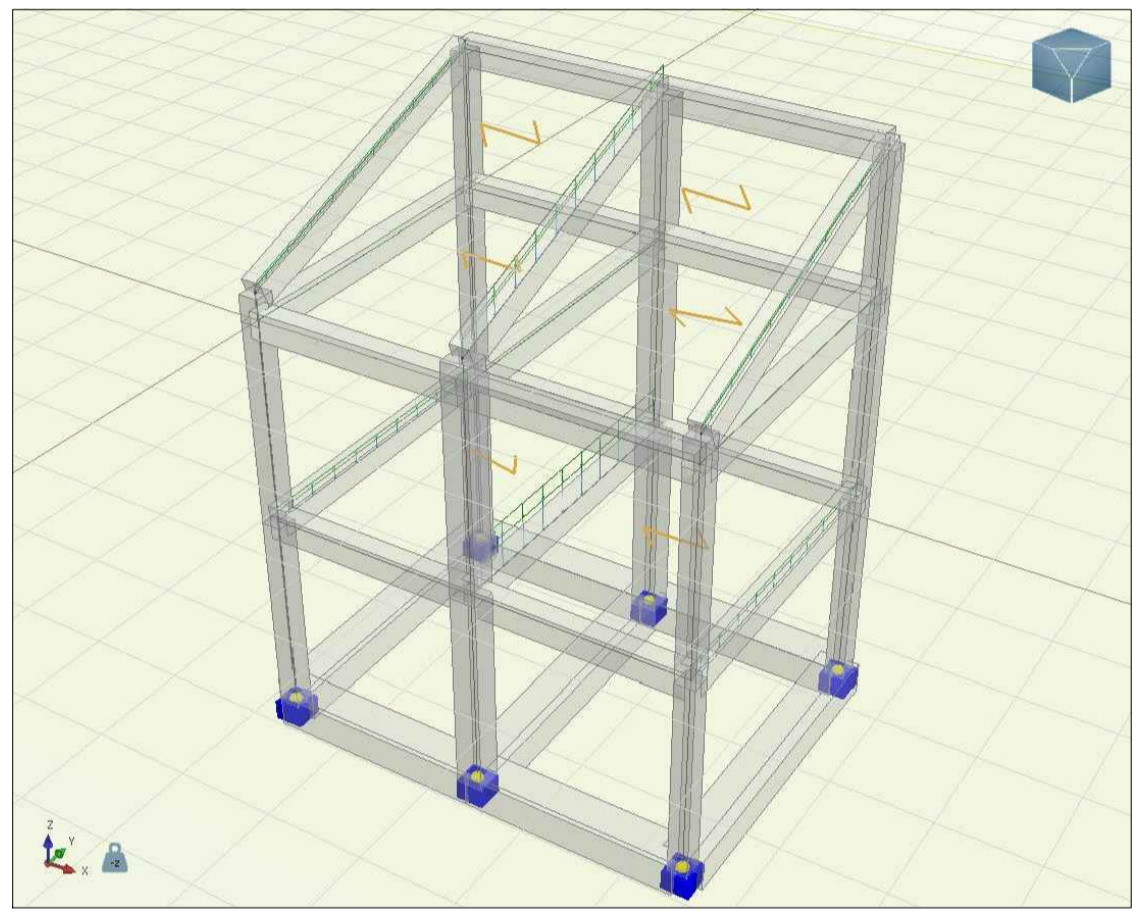
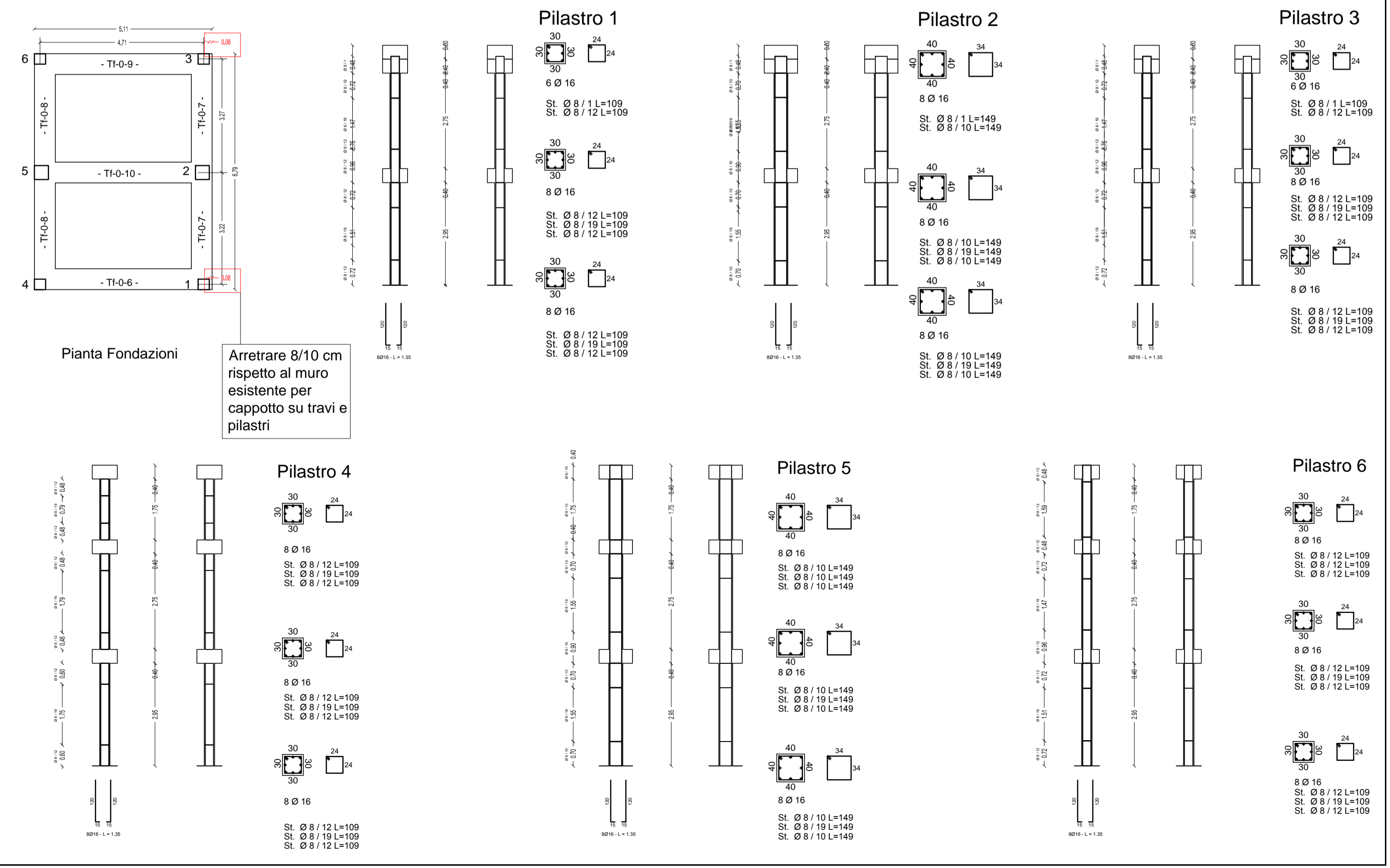
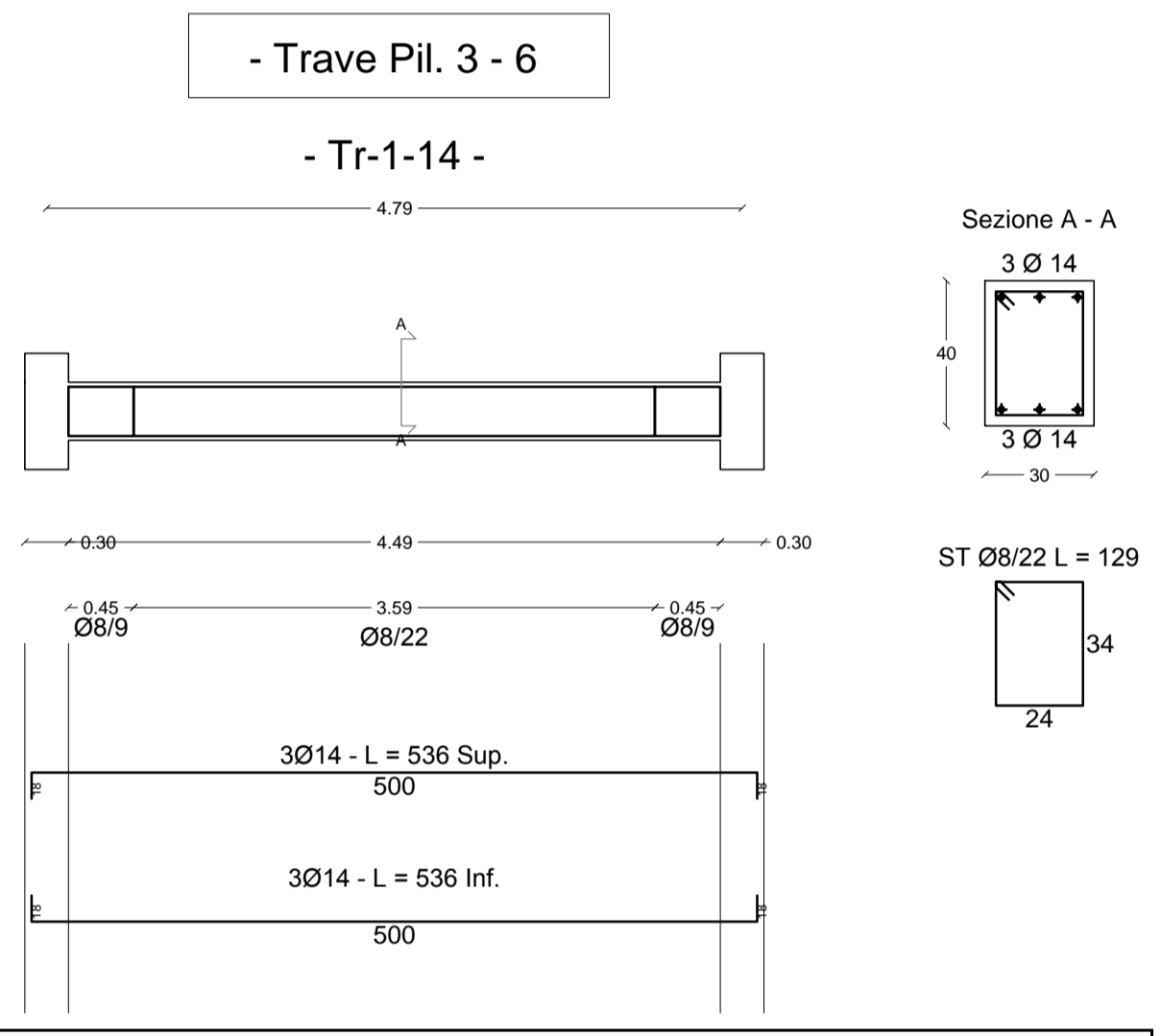
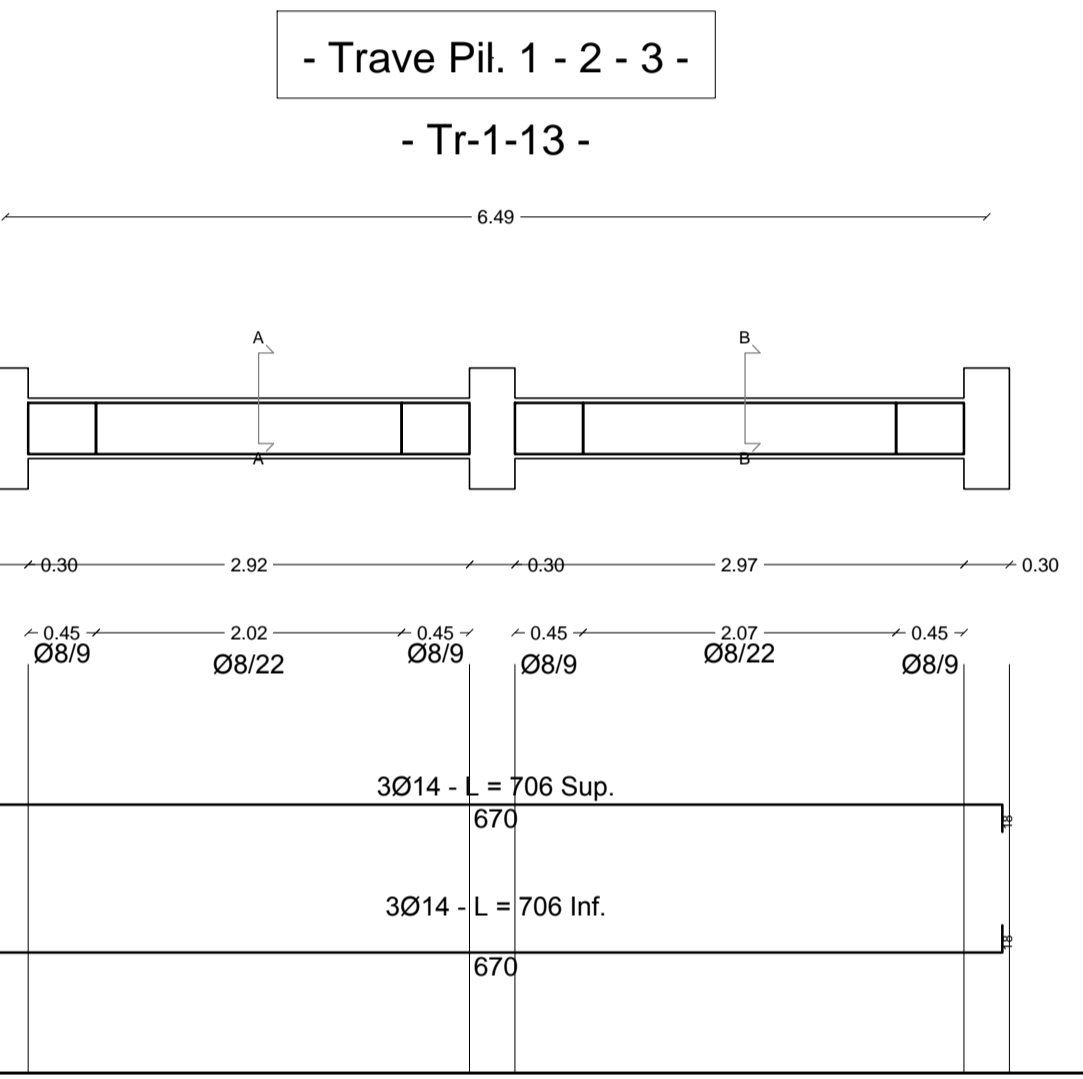
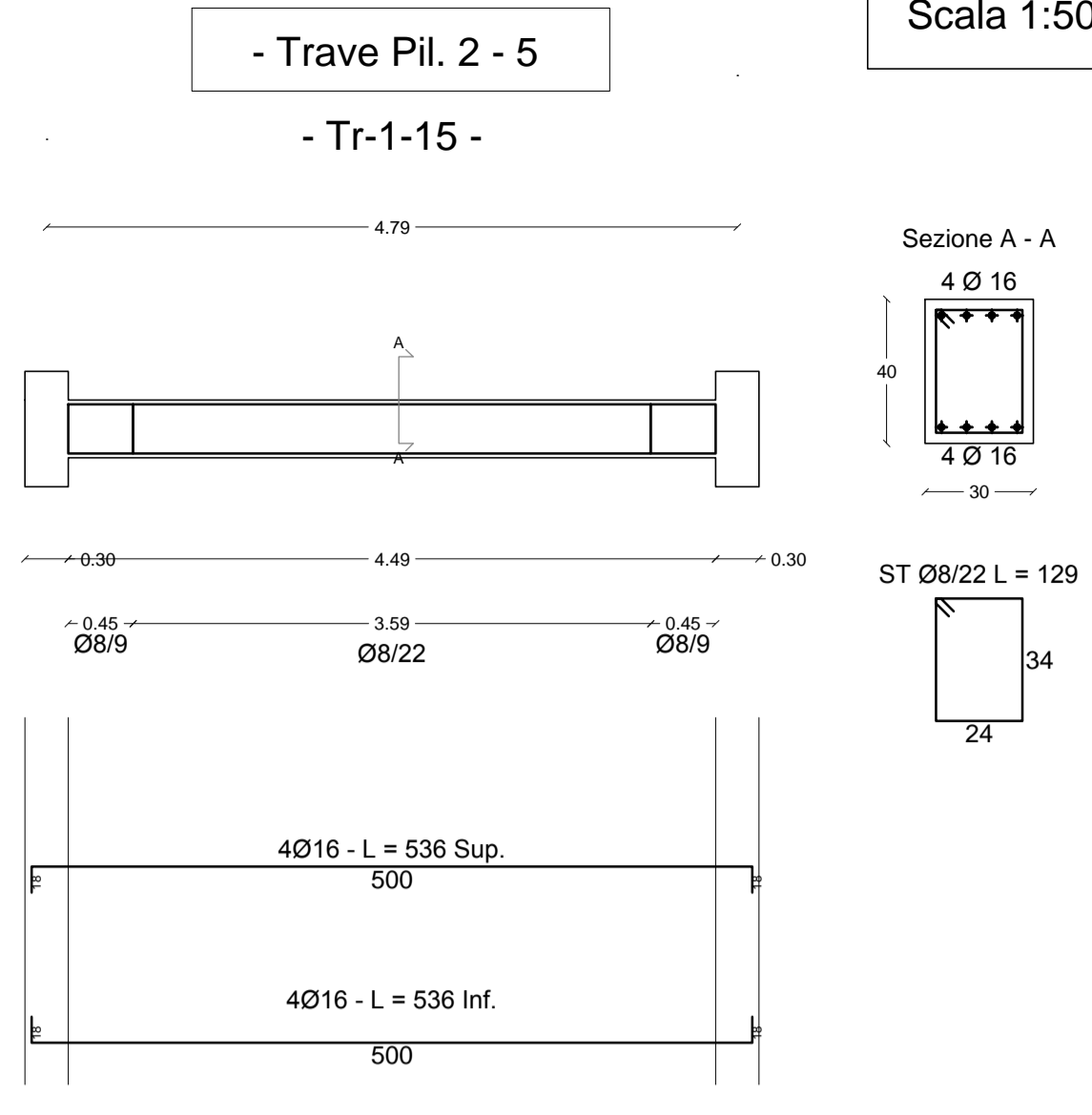
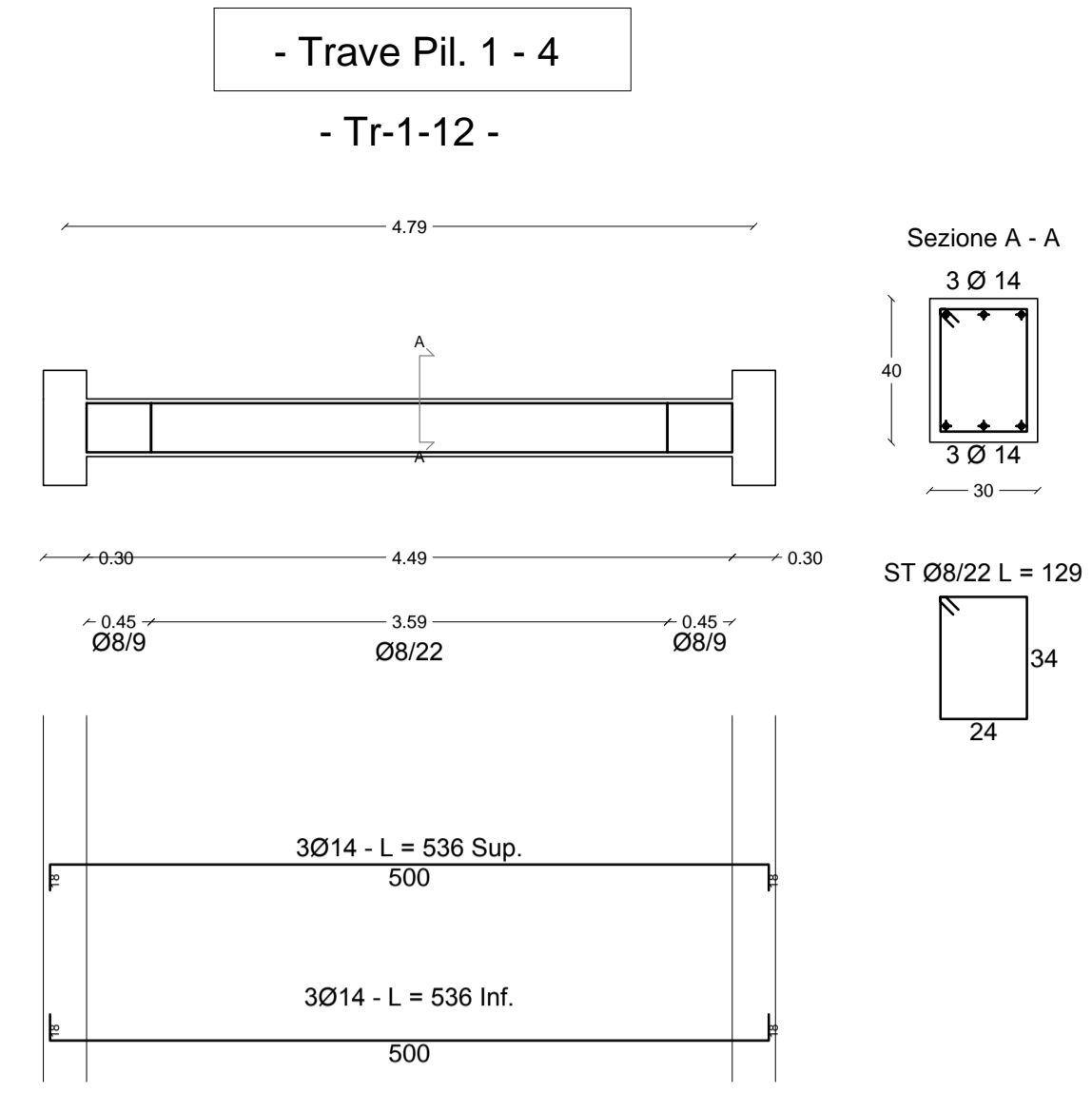
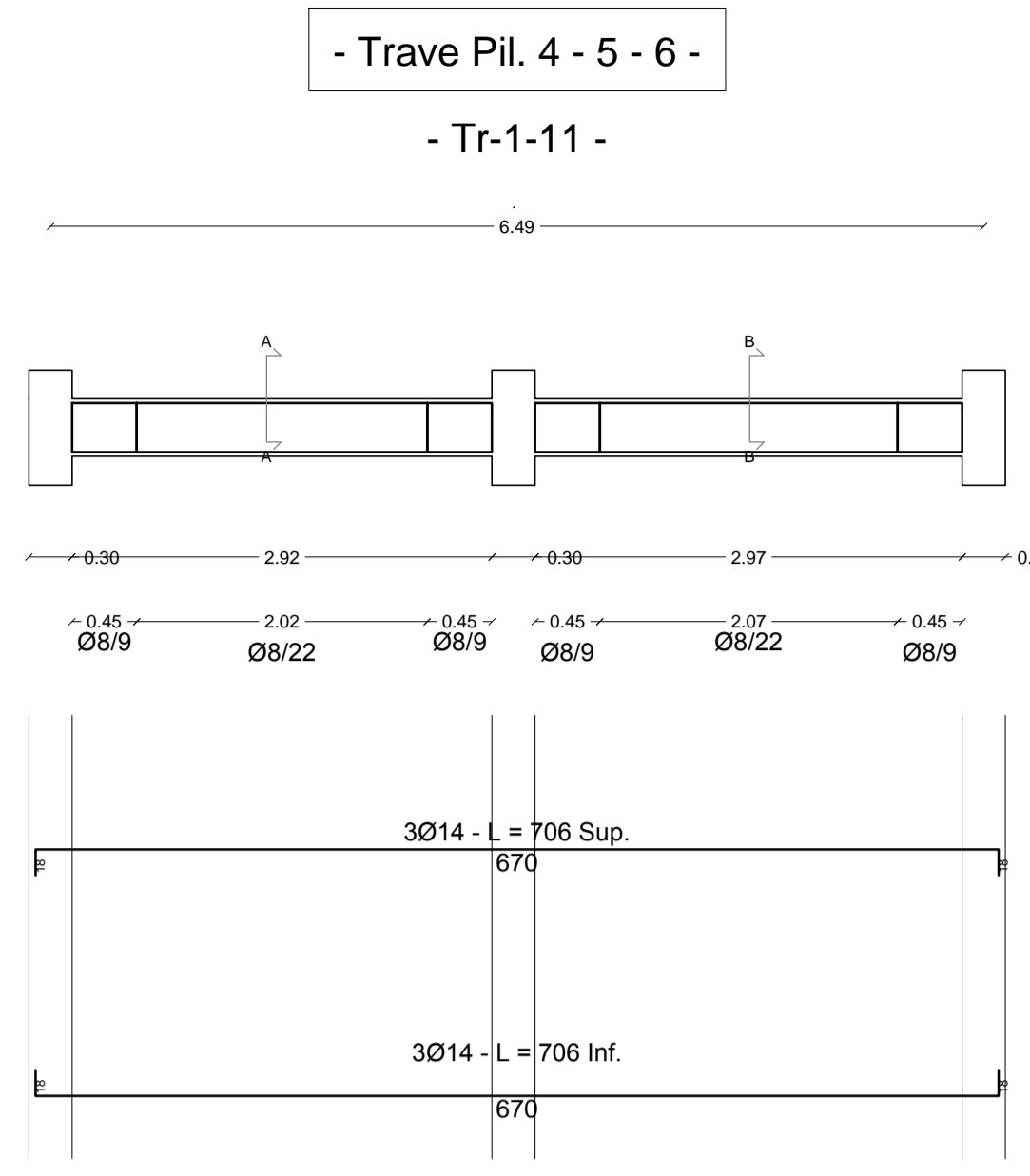
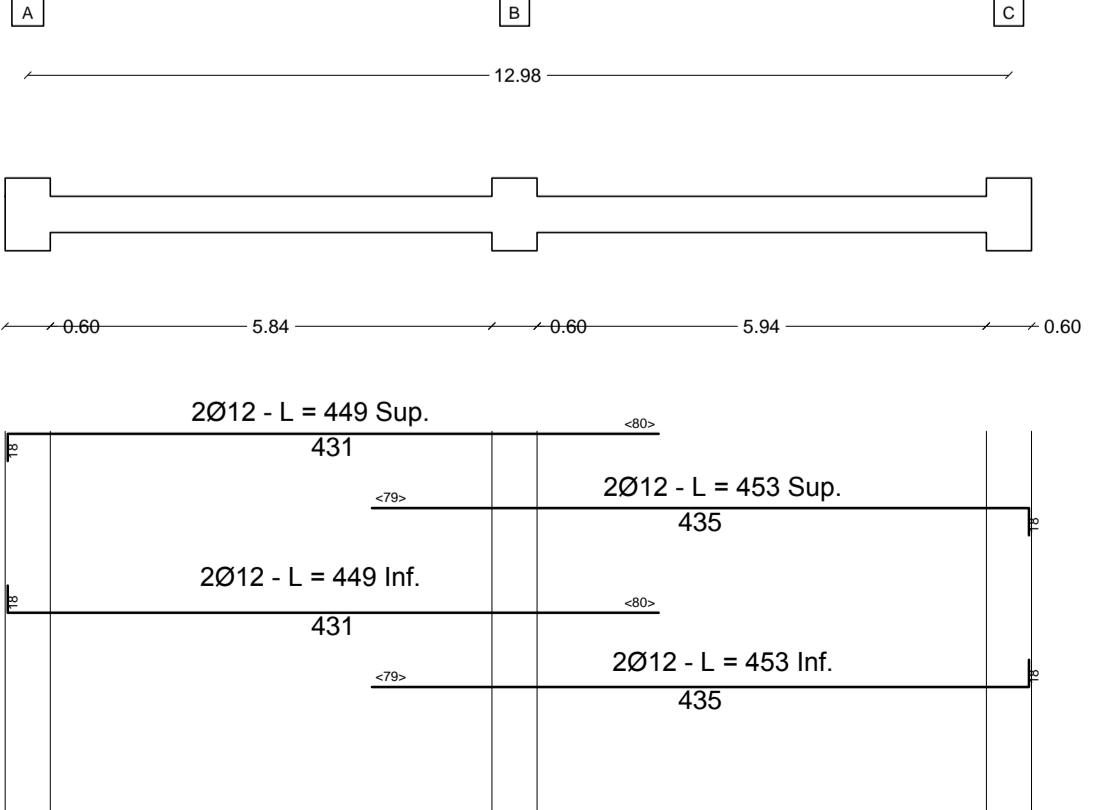


- Primo Solaio -



- Solaio di Copertura -



COMUNE DI LUNAMATRONA
PROVINCIA SUD SARDEGNA

PROGETTO DEFINITIVO-ESECUTIVO
PER I LAVORI DI RISTRUTTURAZIONE DELLA SCUOLA SECONDARIA
INFERIORE DI VIA IGLESIAS

ELABORATO 13: FERRI DI ARMATURA TRAVI - PILASTI E SOLAI NUOVO
BLOCCO SERVIZI

IL PROGETTISTA: dott. ing. Antonello Secchi

VIDIMAZIONI: IL R.U.P.
Geom. Gianpaolo Setzu